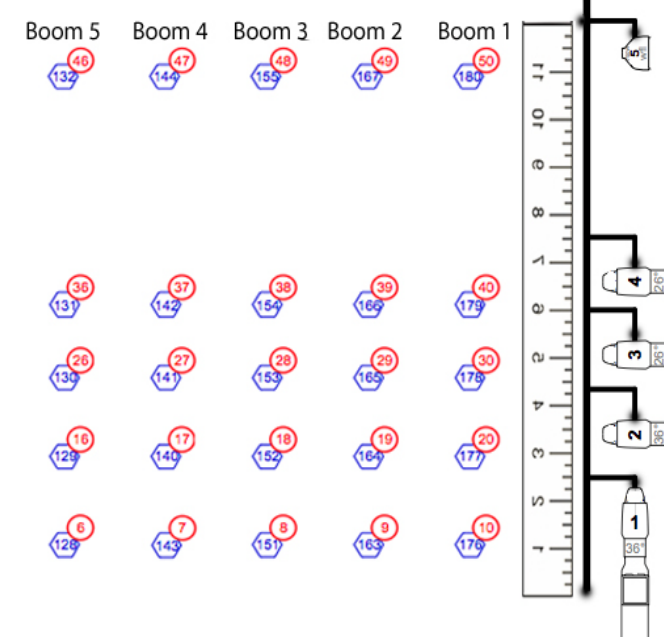
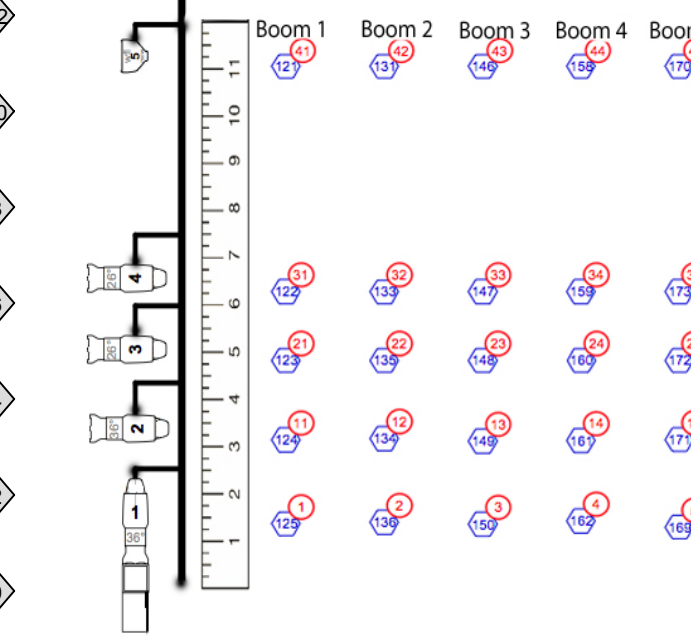


Stage Right Booms



Stage Left Booms



House Control Channels	
Dimmer	Fixtures
183	House Lights Over Front of Mezzanine
184	House Lights Over Back of Retractable Seating
185	House Lights Over Back of Mezzanine
186	Mezzanine HR Isle Lights and Light Lock
187	Center Isle Lights
188	Houset Lights of Front of Retractable Seating
189	Emergency Lights
190	Emergency Lights
191	House Right Step Lights
192	Wall Sconces

- #### Notes
- All Fixtures on 1" centers unless otherwise noted
 - Hanging tolerance is +/- 0.6" inches
 - All Fixtures to have safety chains
 - Instruments on the same dimmer should be assumed to be two-fused together
 - Cable should be dressed nicely against the grid as per Master Electrician
 - All Fixtures should be rostered above the grid when possible
 - Units 1, 5, 9, 13, & 17 on Pipe 19 are mounted on support beams as indicated. Trim Height is 187".
 - Units 1-17 on Pipe 19 powered by dimmers 115 & 116 which contain a CC20 Dimmer Module
 - All Intelligent Fixtures or DMX Controlled Accessories to be patched into DMX Universe 2
 - Cuts of R119 and R122 will be available at time of focus
 - The House will provide all Rig Plot Color and Gobos

- #### General Venue Notes
- All pipes are Black Schedule 40 1 1/2" Steel Pipes
 - Grid Height is 17' as measured to the center of the pipe
 - Booms are 12" high and can be moved upstage or downstage as needed
 - Architectural support beams separate offstage ceiling from stage ceiling as indicated on Plot
 - Two vertical support beams (15" wide and 17 1/2" long) are located 4' 7" and 20' 7" upstage of plaster line on both SR and SL sides of the stage
 - Ceiling height of offstage wings is 13' 7"
 - The first three rows of audience seating retract to allow access to most of grid in seating area
 - All dimmers are distributed evenly in the Grid in boxes of 2 or 4 dimmers
 - All house dimmers have built-in 30' leads with LS-20 (Twidlock) Receptacles
 - Dimmer power via Two (2) ETC Sensor-48 Module Racks
 - Dimmer Control via DMX512 Protocol. Controlled by DMX Universe 1 Input in Control Booth
 - DMX Universe 2 Outputs located on SL side of Grid every 4 pipes. Controlled by DMX Universe 2 Input in Control Booth

This Drawing Represents Design Intent and Concept. The Designer is unqualified to determine the structural or electrical appropriateness of this design, and will not assume responsibility for improper engineering, construction handling, or use. All materials and construction must comply with the most stringent applicable Federal and Local Fire, Safety, Energy, and Environmental Codes.

Signature: _____
Designer

Light Plot: Plan View

Scale: 1/4" = 1'0"

Version # 1/1

Venue: University Center for the Arts
Dance Theater



Colorado State University

Color Key

G840 High Side	R26 Scroller L216	G840 High Side
CMY High Side		CMY High Side
G363 High Side		G363 High Side
	R54 L223	

2014 Fall Dance Concert



Lighting Design by: Jessica Whitehead
Assistant Lighting Designer: Evelyn Helman
Head of Design and Technology: Price Johnston
Master Electrician: Andy Killion
Asst. Master Electrician: Jessica Whitehead
Stage Manager: Meaghan Harris

Instruments

- Source 4 30deg
- Source 4 20deg
- S4 PAR WFL
- Source 4 90 Deg
- 7.5' x 4' Leaf Barn
- Door
- Beam Bender
- Beam Bender
- Source 4 70 deg
- Source 4 70 deg
- VL-1000 Tungsten dimmer
- Source 4 70 deg
- Source 4 70 deg
- Rosco-Cu be
- Altman R40 Strip
- Altman R40 Strip
- Altman R40 Strip
- Source 4 19deg

Accessories

- 7.5' x 4' Leaf Barn
- Door
- Beam Bender

Legend

Color Unit Number Dimmer

